

# COPTHORNE HOTEL

SHEFFIELD

Copthorne Hotel Sheffield  
Bramall Lane, Sheffield, S2 4SU United Kingdom

t: 0114 252 5480

f: 0114 252 5490

e: [reservations.sheffield@millenniumhotels.co.uk](mailto:reservations.sheffield@millenniumhotels.co.uk)

e: [events.sheffield@millenniumhotels.co.uk](mailto:events.sheffield@millenniumhotels.co.uk)

w: [millenniumhotels.co.uk/copthornesheffield](http://millenniumhotels.co.uk/copthornesheffield)

GDS CODE: MU

Opened in 2009 this luxurious, boutique style, four-star hotel is well located close to the city centre as well as to rail and road links, combining convenience and accessibility with state of the art meetings and events facilities.





For guests wishing to stay overnight we have 158 superbly appointed bedrooms, including a sumptuous Penthouse suite with panoramic views of the city, which provide the definitive setting for urban relaxation. We also provide full disabled access, complimentary Wi-Fi access in public areas, a fitness room and ample, free, on-site parking for our guests.

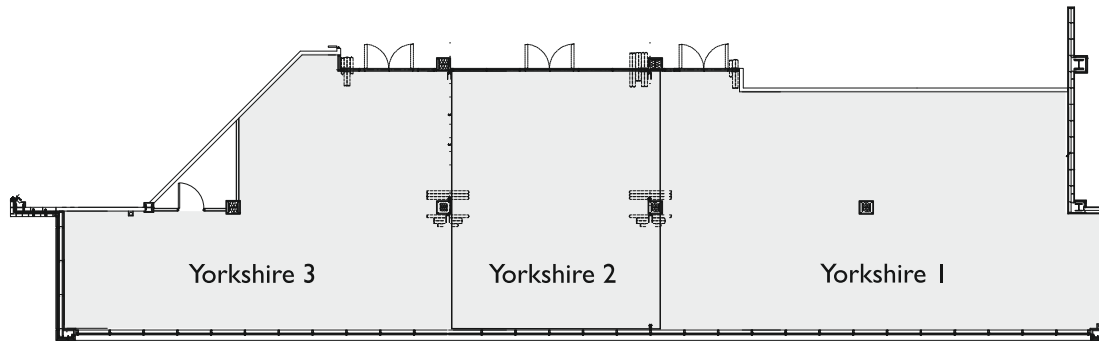
The multi award-winning 18Fifty5 Restaurant offers the perfect setting for any occasion and our Executive Chef and his innovative team take great pride in utilizing locally sourced, seasonal produce wherever possible. We also have an informal and relaxing bar area in which to enjoy a light snack or a refreshing drink.

Three, flexible, multi functional suites cater for up to 400 guests with all rooms benefiting from natural daylight, internet access and are all fully air conditioned.

From exhibitions, conferences, banquets and product launches to smaller seminars, business meetings and private dining we offer a range of state of the art business and conference equipment along with our dedicated team's expertise and unrivalled first class service. Your event co-ordinator will be delighted to offer advice and guidance to ensure your event runs smoothly and memorably.

This hotel is ideal for both business and leisure guests wishing to turn an event in Sheffield into an overnight stay. We look forward to speaking with you to discuss your requirements, and to ensuring that you have made the perfect choice for your forthcoming stay/event with us.

Room	Maximum Capacity				Area	
	 THEATRE	 DINNER	 BOARD	 CABARET	Feet <sup>2</sup>	Metres <sup>2</sup>
Yorkshire Suite	400	300		250	4518	419.8
Yorkshire 1	150	110	40	84	1668	155
Yorkshire 2	60	60	24	48	771	71.5
Yorkshire 3	60	60	30	60	1399	130



## Services and facilities:

### Hotel facilities

- 24 hour room service
- 24 hour reception
- Wi Fi access in public areas
- Ample free car parking

### Leisure facilities

- Multi award winning, 100 seat restaurant
- Lounge & bar area
- Fitness room

### Meetings and events facilities

- Private entrance and foyer
- 3 flexible, multi functional suites catering for up to 400 guests
- Natural daylight in each room
- State of the art business & conference equipment
- WiFi
- Variety of flexible dining options
- Breakout rooms

### Bedroom facilities

- King & Queen size beds with duvets
- Air conditioning with individual climate control
- Internet access
- Direct dial telephone with voicemail
- Work desk
- Plasma TV with satellite channels, radio & pay movies
- Tea & coffee making facilities
- Hospitality fridge
- Ironing board & iron
- Hairdryer

### Location

- Centrally located, next to the Sheffield United Football Club stadium on Bramall Lane

### Directions to the hotel

**By car** from North/South/East. Exit M1 at Junction 33 following signs to Sheffield (A57). Continue along the Sheffield Parkway until the Park Square roundabout. Take the 3rd exit and follow the A61 (Chesterfield Road) with the train station on your left. Follow the 'brown information' signs for Bramall Lane.

**Nearest Airport:** Robin Hood, Doncaster, Airport  
- 40 minutes

East Midlands Airport  
- 45 minutes

### By rail:

Sheffield train station is 1 mile from the hotel

### Places of interest

- Sheffield United Football Club Stadium and Legends of the Lane Museum
- Sheffield Arena
- The Winter Gardens
- Don Valley Stadium
- Ponds Forge
- Meadowhall Shopping Centre
- The Peak District



40 minutes drive from Robin Hood Airport



1 mile from Sheffield Train Station