



COPTHORNE TARA HOTEL

LONDON KENSINGTON

Scarsdale Place, Kensington, London W8 5SR

Telephone: [44] (0) 20 7937 7211

Fax: [44] (0) 20 7937 7100

Email: sales.tara@mill-cop.com

Website: www.millenniumhotels.com

HOTEL OVERVIEW

- The Copthorne Tara, one of London's best known 4-star hotels, is ideally located in a quiet corner of Kensington. Within easy reach of the shops and restaurants of Kensington High Street, Knightsbridge and Notting Hill.

CAR PARKING

- The hotel boasts over 75 onsite car park spaces for its guests. Car parking charges apply.

PLACES OF INTEREST

- The Royal Albert Hall
- Hyde Park
- Kensington Palace & Gardens
- The Natural History Museum and Science Museum
- The Victoria & Albert Museum
- Earl's Court & Olympia Exhibition Centres
- Portobello Market
- Shopping on the King's Road and High Street Kensington

VISITOR INFORMATION

- Currency: Pound Sterling
- Language: English
- Climate:

| | Max | Min |
|-------------------|-----|-----|
| Summer Fahrenheit | 100 | 52 |
| Celsius | 38 | 11 |
| Winter Fahrenheit | 50 | 30 |
| Celsius | 10 | -1 |

ACCOMMODATION

- A total of 833 bedrooms
- **Standard Rooms**

All rooms are spacious and elegantly furnished. Traditional decor of natural wood and soothing shades enhance and complement each room. Six floors of standard bedrooms are designated non-smoking. In-room amenities include satellite TV & in-house movies, air conditioning, direct-dial telephone, high speed internet access, radio, alarm, trouser press and iron, refrigerator, tea & coffee making facilities and hair dryer.

- **Club Rooms**

Situated on the top two floors of the hotel, our Club bedrooms are more spacious with luxurious decor and views over London. All Club Rooms feature fluffy Bathrobes and complimentary mineral water with the option of late check-out. Our Club guests can also benefit from complimentary use of our fitness room and the Copthorne Club lounge which offers continental breakfast, daily newspapers, internet access, tea & coffee served throughout the day and evening drinks served between 6.45pm - 8.15pm.

- **Junior Suites**

Located on the top floor of the hotel, Junior Suites are comprised of a Club bedroom with an interconnecting lounge area and second ensuite bathroom. Combining luxurious decor with views over London this is a truly unique experience perfect for a special occasion.

- **Adapted Rooms**

The hotel is renowned for its high specification bedrooms for the disabled. All of the adapted bedroom doors open and close electronically, allowing ample time for a wheelchair user to pass through. Door locks are electronically actuated by a key card and the bedside control panels allow operation of the radio, TV and room lights.

These rooms are also fitted with entry phones, which allow verbal communication with someone at the room door prior to opening the door remotely from the bedside and with an emergency call feature from the bedside and another one in the bathroom. For hearing impaired guests, there is a visual alarm system as well as a vibrating alarm which can be fitted to the bed.

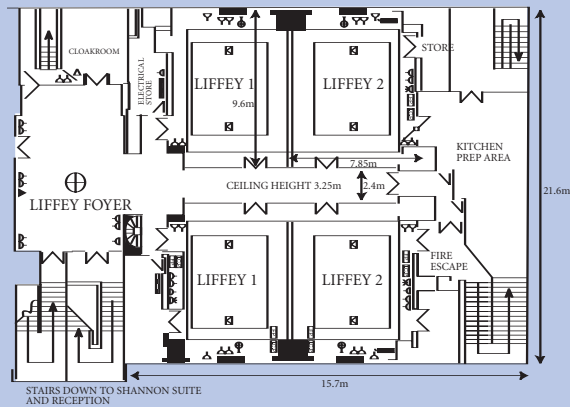
- Check In - 3.00pm
- Check Out - 12.00pm

SERVICES AND FACILITIES

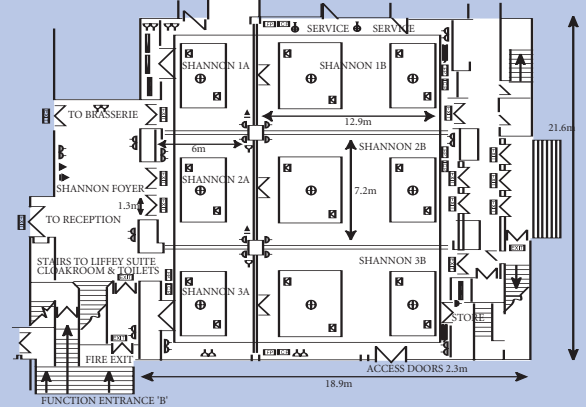
- 24-hour guest services and business centre
- Theatre desk
- Bureau de change
- 24-hour security and room service
- Same day laundry and dry cleaning (Monday - Friday)
- Car rental
- Multi-lingual staff
- Fitness Room
- Beauty & Well-being room - book in advance
- Shop
- Copthorne club Lounge
- Wireless connectivity in all public areas and meeting rooms
- Broadband internet access throughout the hotel



LIFFEY SUITE



SHANNON SUITE



| Room | Theatre | Classroom | Boardroom | U-shape | Banquet | Cabaret | Dinner Dance |
|---------------------|---------|-----------|-----------|---------|---------|---------|--------------|
| Shannon Suite | 280 | 160 | 92 | 400 | 300 | 120 | 240 |
| Shannon 1 | 80 | 60 | 40 | 120 | 100 | 49 | - |
| Shannon 2 | 80 | 60 | 40 | 120 | 100 | 49 | - |
| Shannon 3 | 80 | 60 | 40 | 120 | 100 | 49 | - |
| Liffey Suite | 260 | 120 | 90 | 250 | 180 | 96 | 132 |
| Liffey 1, 2, 3 or 4 | 40 | 20 | 20 | 40 | 30 | 20 | - |
| Liffey 1 and 2 | 100 | 60 | 40 | 100 | 70 | 42 | - |
| Liffey 3 and 4 | 100 | 60 | 40 | 100 | 70 | 42 | - |

MEETINGS AND EVENTS FACILITIES

- The flexible purpose-built conference and banqueting accommodation at the Copthorne Tara hotel includes a full range of facilities, from small meeting rooms and boardrooms to large conference suites, which can be sub-divided to create smaller meeting space.
- The hotel offers two large multi-purpose function suites (Shannon and Liffey), which are situated away from the main public areas of the hotel and are ideal for conferences and private dining events. Both suites can be transformed to create smaller air-conditioned syndicate rooms to meet any need. These rooms offer multiple broadband internet access in with Wi-Fi connectivity and full audio visual support. Full bar facilities are available for dinner dances and parties.
There are also three private boardrooms for up to six people in each, featuring en suite toilets, TV and VCR, flipcharts and tea and coffee making facilities.
- Good disabled access to boardrooms and both suites is provided throughout the hotel as well as built-in induction loop for the hard of hearing in both suites.

RESTAURANTS AND BARS

- **The Brasserie Restaurant and Bar**
The Brasserie serves a wide range of exquisite international dishes, served in a friendly relaxed atmosphere. The Bar is open until 1am for hotel's residents.
- **Bugis Street Brasserie**
Bugis Street Brasserie offers a delightful selection of authentic Singaporean, Malaysian and Chinese cuisine. House specialities include: Mee Goreng, Nasi Goreng, fish fillets stir-fry with black pepper sauce and Aromatic crispy duck.
- **Cafexpress**
Open from 7am daily, Cafexpress offers a range of freshly made coffees and teas, together with delicious hot and cold

snacks, either to enjoy while you browse or "to go". CafeXpress offers 24 hour access to high speed internet stations and plasma screen viewing for topical news or sporting events.

DIRECTIONS TO THE HOTEL

- **By Car**
Travelling from the West (M4):
M4 becomes A4. After approximately 4 miles, turn left off the Cromwell Road at the traffic lights onto Marloes Road, (just before the Cromwell Hospital). At the top of Marloes Road bear right and the Copthorne Tara Hotel is directly ahead in Scarsdale Place.
- **By Underground Tube**
The Copthorne Tara Hotel Kensington is within a 5 minutes walk from High Street Kensington tube station.



For information about any of the other Millennium and Copthorne Hotels in the Americas, Asia Pacific, Australasia and Europe, the Middle East and North Africa, contact your Millennium and Copthorne sales office on: Tel: [44] (0) 207 872 2403 or to make a booking, contact reservations on: Tel: [44] (0) 800 41 47 41
Website: www.millenniumhotels.com