

BOARDROOMS

At the Millennium Hotel Complex we have 7 meeting rooms to choose from to meet all your conferencing needs. They all offer the latest in AV technology including 10mb SDSL broadband, Wi-Fi with ethernet ports, new VDUs and screening facilities.

Maximum Room Capacities

	Theatre	Classroom	Boardroom	Reception	Banquet	Cabaret	Dinner Dance	U-Shape
Gloucester	-	-	10	-	-	-	-	6
Brompton	25	12	12	-	-	-	-	10
Harrington	30	15	18	-	-	-	-	13
Changi	25	10	14	-	-	16	-	-
Marina	25	10	14	-	-	16	-	-
Tanglin	25	10	14	-	-	16	-	-
Bailey's Boardroom	-	-	12	-	-	-	-	-

Facilities

Tech Mains 63A *

Intelligent lighting *

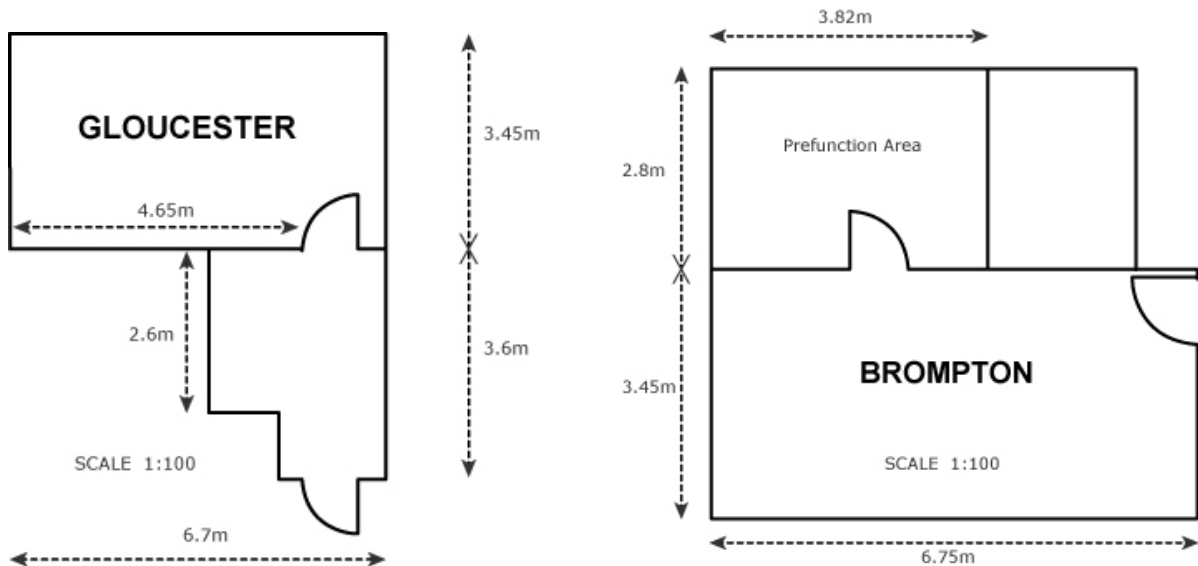
In-house PA System *

10MB uncontested SDSL Broadband *

Wi-Fi and Dial-up *

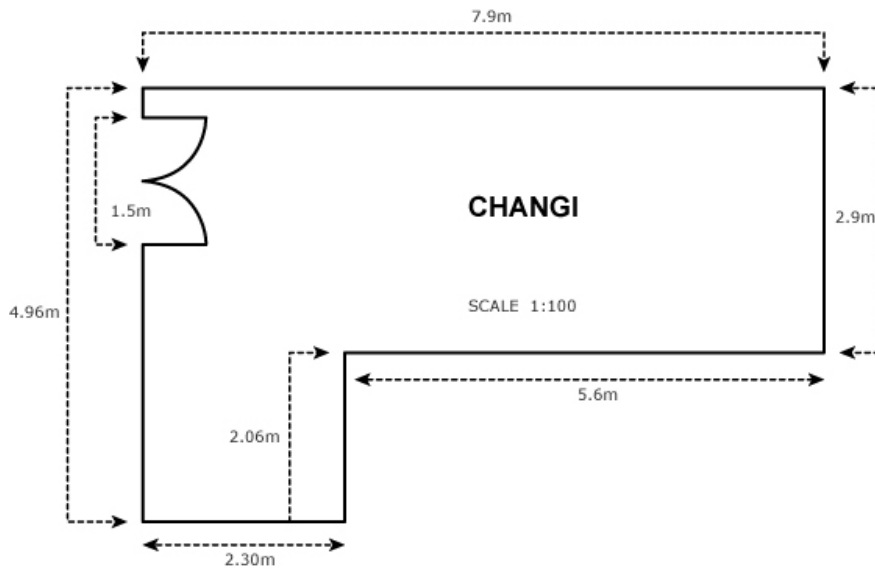
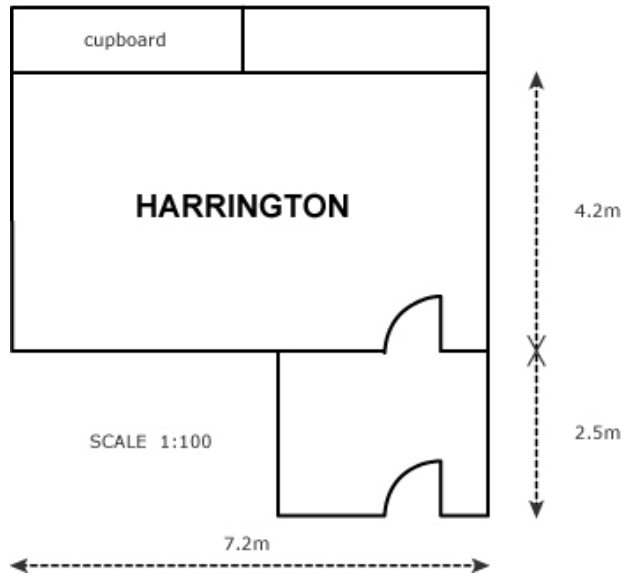
* denotes additional charge

Floor Plans



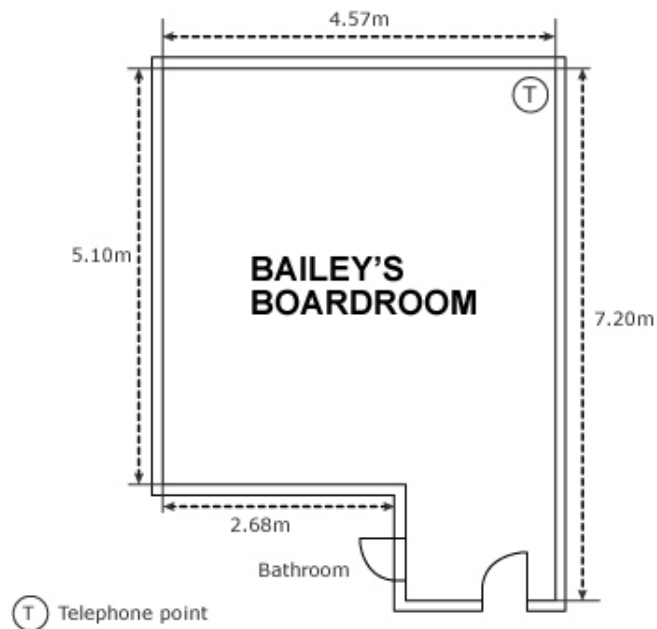
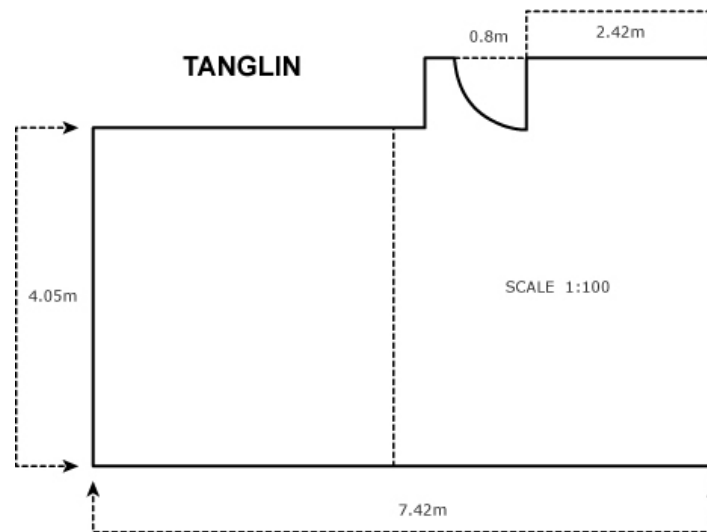
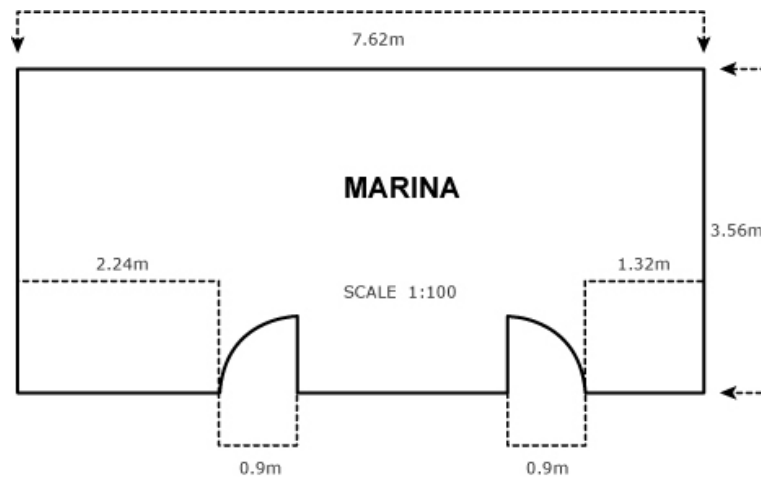
MILLENNIUM
 GLOUCESTER HOTEL & CONFERENCE CENTRE
 LONDON KENSINGTON

Millennium Gloucester Hotel & Conference Centre, 4-18 Harrington Gardens, London, SW7 4LH
 Tel: +44 (0)20 7331 6257 Fax: +44 (0)20 7331 6466 Email: mcc.events@mill-cop.com



MILLENNIUM
GLOUCESTER HOTEL & CONFERENCE CENTRE
 LONDON KENSINGTON

Millennium Gloucester Hotel & Conference Centre, 4-18 Harrington Gardens, London, SW7 4LH
 Tel: +44 (0)20 7331 6257 Fax: +44 (0)20 7331 6466 Email: mcc.events@mill-cop.com



MILLENNIUM
GLOUCESTER HOTEL & CONFERENCE CENTRE
 LONDON KENSINGTON