

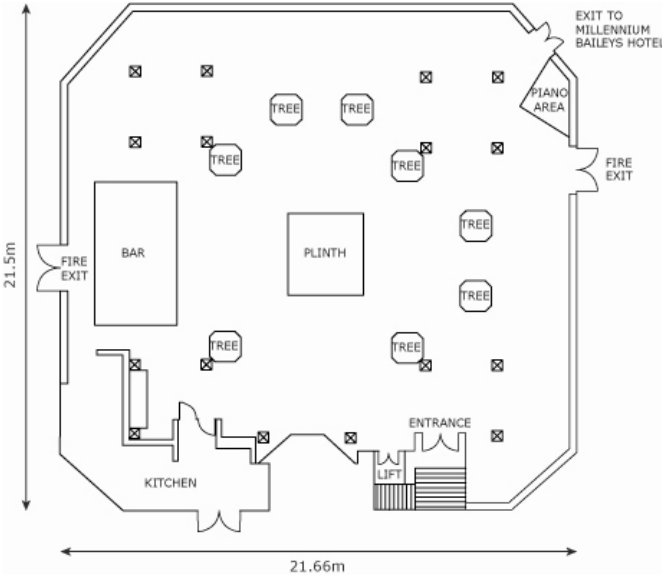
# CONSERVATORY

The Conservatory is a truly stunning glass room at the vibrant heart of the Millennium Conference Centre. Striking and stylish, elegant and ornate; just a glance at the Conservatory makes a big impression. The beauty of this magnificent glass structure is enhanced still by its splendidly up-lit palm trees that create a new definition of chic. By day it's a charming and relaxed setting for hospitality and lunches, at night, a sparkling gem, a physical recreation of exuberance. This jewel in the MCC crown is ideal for parties, receptions and private dining.

## Maximum Room Capacities

|              | Theatre | Classroom | Boardroom | Reception | Banquet | Cabaret | Dinner Dance | U-Shape |
|--------------|---------|-----------|-----------|-----------|---------|---------|--------------|---------|
| Conservatory | 250     | -         | 30        | 400       | 180     | 160     | 150          | -       |

## Floor Plan



## Dimensions

|            |  |
|------------|--|
| Dimensions | 21.5 x 21.66m / 70'54 x 71'06              |
| Max Height | 6 storeys                                  |
| Area       | 287m <sup>2</sup> / 3090.51ft <sup>2</sup> |

## Access

|             |                |
|-------------|----------------|
| Door Height | 2.7m / 6'10ft  |
| Door Width  | 1.47m / 4'10ft |

## Facilities

- Natural daylight
- Atmospheric lighting
- Central heating and air conditioning
- Self contained kitchen & bar
- Dimmer Control
- Telephone Outlet
- Intelligent lighting
- In-house PA system
- 10MB SDSL Broadband, Wi-Fi and Dial-up



## **Technical Specifications**

DMX / 8 installed Martin Mac 250 Krypton Intelligent Lights / Customisable House Lighting / Electric Blinds / Tech mains 63 amp single phase / Audio tie lines / In-house PA system / Dial-up, Broadband & Wireless internet.



**MILLENNIUM**  
GLOUCESTER HOTEL & CONFERENCE CENTRE  
LONDON KENSINGTON

Millennium Gloucester Hotel & Conference Centre, 4-18 Harrington Gardens, London, SW7 4LH  
Tel: +44 (0)20 7331 6257 Fax: +44 (0)20 7331 6466 Email: [mcc.events@mill-cop.com](mailto:mcc.events@mill-cop.com)