

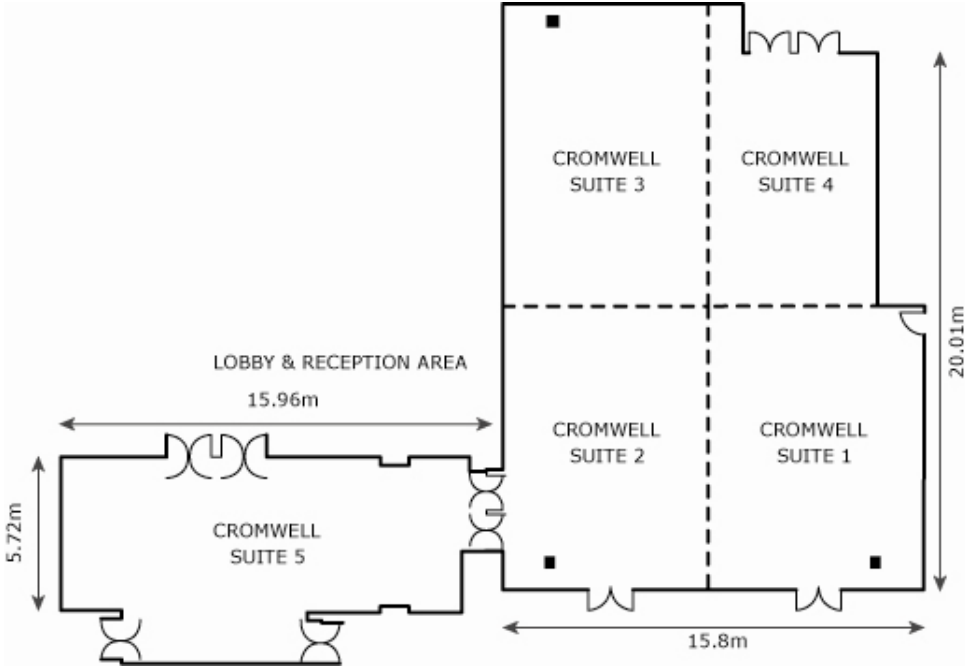
CROMWELL

With its chandeliers and vaulted ceiling this stylish room is a favourite setting for private dinners of up to 250 but can also comfortably accommodate up to 380 delegates for a theatre-style presentation. Effective partitioning also means you can break the room into four meeting rooms.

Maximum Room Capacities

	Theatre	Classroom	Boardroom	Reception	Banquet	Cabaret	Dinner Dance	U-Shape
Cromwell	380	200	-	500	310	190	250	72
Cromwell 1 / Cromwell 2	180	110	48	250	120	75	100	44
Cromwell 3 / Cromwell 4	140	80	38	250	110	70	-	40
Cromwell 1	50	36	24	120	50	32	-	32
Cromwell 2	50	36	24	120	50	32	-	32
Cromwell 3	50	36	24	120	50	32	-	32
Cromwell 4	40	28	18	90	40	24	-	24
Cromwell 5	100	50	38	150	70	56	60	40

Floor Plan



Dimensions

Dimensions	26.62x16.12m / 87'4x52'11
Max Height	3.75m / 12'4
Min Height	3.32m / 10'11
Area	312m ² / 3358ft ²

Access

Door Height	2.00m / 6'7ft
Door Width	1.57m / 5'2ft

Facilities

TV Aerial Outlet
Double 13 Amp power point
Telephone Outlet
Dimmer Control
Computer Outlet
Microphone Outlet
Air-Conditioning Control
Tech Mains 63 amp*
Intelligent lighting*
In-house PA system*
10MB SDSL Broadband, Wi-Fi and Dial-up
Remote controlled Pinstpot lighting

* denotes additional charge

Technical Specifications

T.V. / DMX / 8 installed Martin Mac 250 Krypton Intelligent Lights / Dimmer controlled house lighting / Audio inputs / In-house PA system / Installed Projection screen / Tech mains 63amp three phase / Tech mains 32amp single phase (Cromwell 5) / Dial-up, Broadband & Wireless internet / Remote controlled Pinstpot Lighting.



MILLENNIUM
GLOUCESTER HOTEL & CONFERENCE CENTRE
LONDON KENSINGTON

Millennium Gloucester Hotel & Conference Centre, 4-18 Harrington Gardens, London, SW7 4LH
Tel: +44 (0)20 7331 6257 Fax: +44 (0)20 7331 6466 Email: mcc.events@mill-cop.com