

SENTOSA

Where one room can become nine, nine rooms can become four or two or any number of useful configurations between. When the room is subdivided, each unit is totally self-contained and effectively sound proofed up to 65 decibels. Syndicate and breakout meetings of almost any combination of number and capacity can be accommodated with this build-to-order arrangement.

The variable geometry of the Sentosa Suite has earned it an envious reputation as a remarkable meetings facility. When used in conjunction with the Orchard Suite, the flexibility of Sentosa is enriched with additional space.

Maximum Room Capacities

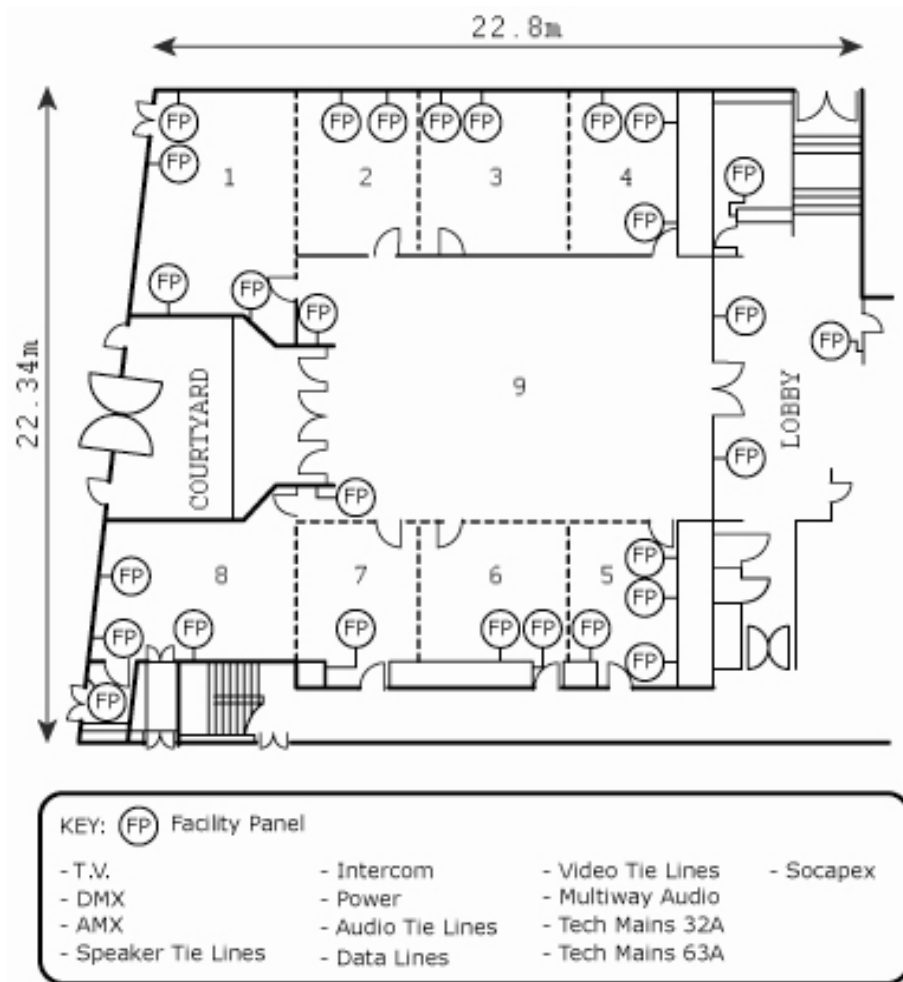
	Theatre	Classroom	Boardroom	Reception	Banquet	Cabaret	Dinner Dance	U-Shape
Sentosa Suite	350	250	-	500	350	280	290	-
Sen 1 - 4	110	77	-	150	70	72	90	-
Sen 5 - 8	110	78	-	150	60	64	80	-
Sen 1 - 4 + 9	198	150	-	300	150	128	180	-
Sen 1/2	52	40	25	90	30	32	40	22
Sen 2/3	52	34	25	60	20	24	30	22
Sen 3/4	52	34	25	60	20	24	30	22
Sen 5/6	45	24	20	60	20	24	30	20
Sen 6/7	45	24	26	80	30	32	40	15
Sen 7/8	62	36	32	80	30	32	40	26
Sentosa 1	43	20	20	50	20	-	-	24
Sentosa 2	20	10	10	30	-	-	-	8
Sentosa 3	24	15	12	30	-	-	-	10
Sentosa 4	20	10	10	20	-	-	-	8
Sentosa 5	20	10	10	20	-	-	-	8
Sentosa 6	20	15	14	30	-	-	-	10
Sentosa 7	18	10	10	20	-	-	-	8
Sentosa 8	36	20	20	30	-	-	-	20
Sentosa 9	100	80	-	150	90	72	-	-



MILLENNIUM
GLOUCESTER HOTEL & CONFERENCE CENTRE
LONDON KENSINGTON

Millennium Gloucester Hotel & Conference Centre, 4-18 Harrington Gardens, London, SW7 4LH
Tel: +44 (0)20 7331 6257 Fax: +44 (0)20 7331 6466 Email: mcc.events@mill-cop.com

Floor Plan



Dimensions

Dimensions	21 x 21m / 68'10 x 68'10
Max Height	3.52m / 11'7
Min Height	3.52m / 11'7
Area	393m ² / 4230ft ²
	Multiway Audio

Access

Door Height	2.1 m / 6'11 ft
Door Width	2.0 m / 6'7 ft

Facilities

Natural daylight
TV/DMX/Crestron



MILLENNIUM
GLOUCESTER HOTEL & CONFERENCE CENTRE
LONDON KENSINGTON

Millennium Gloucester Hotel & Conference Centre, 4-18 Harrington Gardens, London, SW7 4LH
Tel: +44 (0)20 7331 6257 Fax: +44 (0)20 7331 6466 Email: mcc.events@mill-cop.com

Speaker/Audio/Video Tie lines
Tech Mains 32A/64A/125*
Multiway Audio
10MB SDSL Broadband, Wi-Fi,
ISDN and Dial-up*
Intelligent lighting
Installed projectors & screens*
LED decorative lighting
Customisable house lighting
In-house PA system*
Remote controlled pin-spot lighting*

* denotes additional charge

Technical Specifications

T.V. / DMX / 12 installed Martin Mac 250 Krypton Intelligent Lights / Customisable House Lighting / LED Decorative Lighting (Coffers) / Crestron control system / Speaker tie lines / Intercom (cans) / Audio tie lines / In-house PA system / Video tie lines / 4 x Installed Projectors with Screens / 4 x Installed 37" LCD TV's / Video distribution & switching / Multi-way Audio / Audio distribution system / Tech mains 32amp single phase / Tech mains 63amp three phase / Tech mains 125amp three phase / Dial-up, Broadband & Wireless internet / Remote controlled Pinspot Lighting.



MILLENNIUM
GLOUCESTER HOTEL & CONFERENCE CENTRE
LONDON KENSINGTON

Millennium Gloucester Hotel & Conference Centre, 4-18 Harrington Gardens, London, SW7 4LH
Tel: +44 (0)20 7331 6257 Fax: +44 (0)20 7331 6466 Email: mcc.events@mill-cop.com